

DRAIN-BACK PLUG

MODEL 48 DRAIN BACK PATENT PENDING

FOR SUBMERSIBLE PUMP WATER WELL INSTALLATIONS

Flomatic's Model 48 is a Drain-Back-Plug for Submersible Pump Water Well Installations. The Flomatic reusable Drain-Back valve Model 48 is designed to automatically drain the riser pipe when activated.

Designed in an all stainless steel construction, the spring loaded valve, threads to install into a 1" pipe tee and it is activated when a weight is dropped into the well drop.

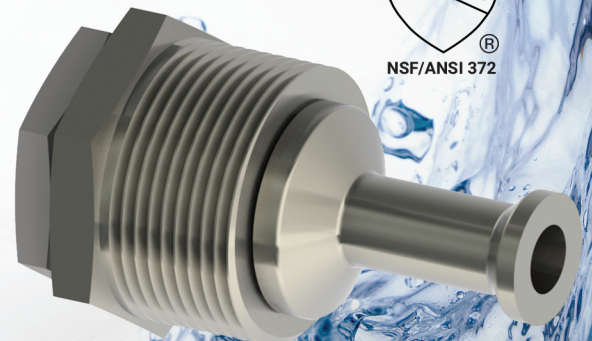
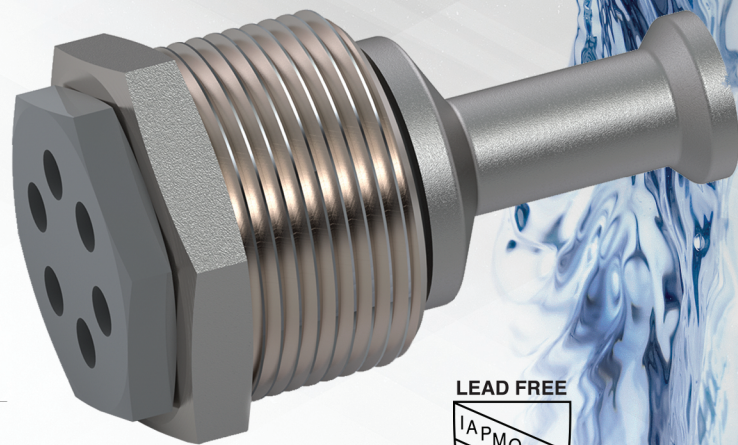
By utilizing this drain back Model 48 valve the pulling of pipe and pump becomes much easier and safer.

BENEFITS

- Eliminates water splashing at well head
- Prevents potential cross-contamination of the water well
- Reduces Pulling weight by 20-50%
- Automatically drains water in riser pipe

FEATURES

- Simple Construction
- Reusable and Resets Automatically After Use
- Easy Field Replaceable
- Resilient Seating, Standard Flomatic Buna-N
- Un-Leaded Body, NSF 372 Certified
- Corrosion Resistant Stainless Steel Construction
- 400 PSI Pressure Rating



FLOMATIC® VALVES

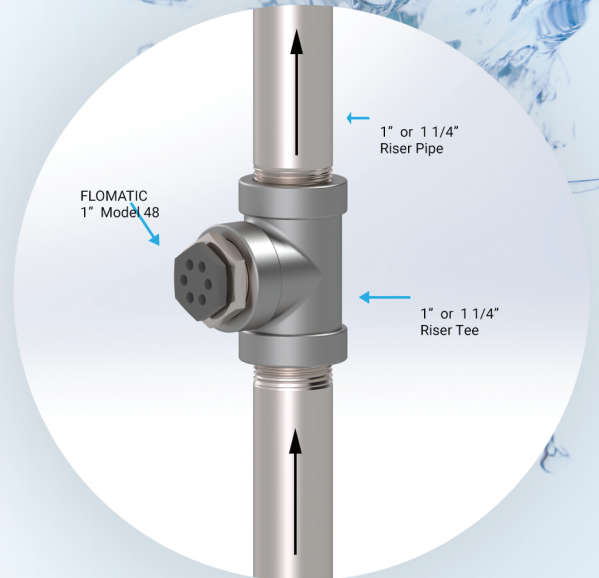
High Quality Valves Built To Last...

PRODUCT OPERATION

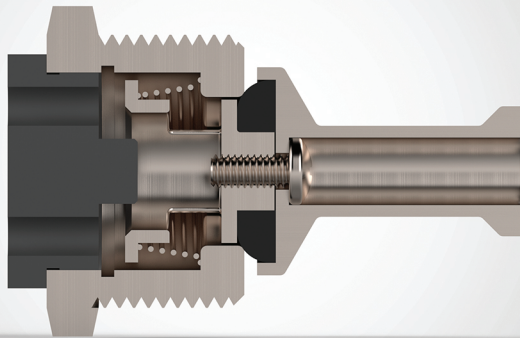
The Drain-Back Plug Model 48 Valve is installed in the water well drop pipe below or at the well static water level in a standard 1" or 1 1/4" pipe tee (and above the check valve location). The valve is normally spring loaded closed (See Fig. 1).

The Drain-Back Valve Model 48 is activated when a weight is dropped into the well drop pipe. The plunger is struck the weight and opens the valve (See Fig. 2).

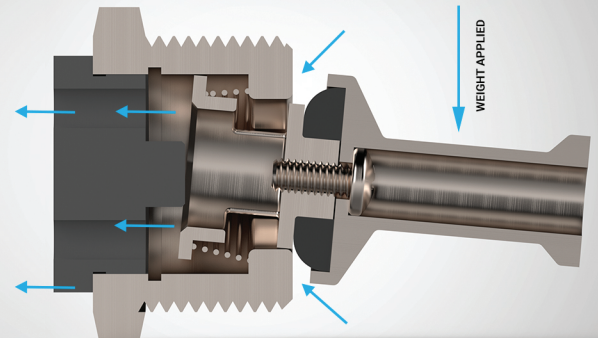
This allows well water in the drop pipe to drain back to the water well. Model 48 will make it easier and safer to pull the pipe and pump as no water will be spilled on the surface around the well head preventing potential cross-contamination of the water well. In addition, the pump service professional will not be soaked by the water from each string of pipe when they are un-threaded pipe filled with water (a pipe or "pipe stick" is typically about 20' long).



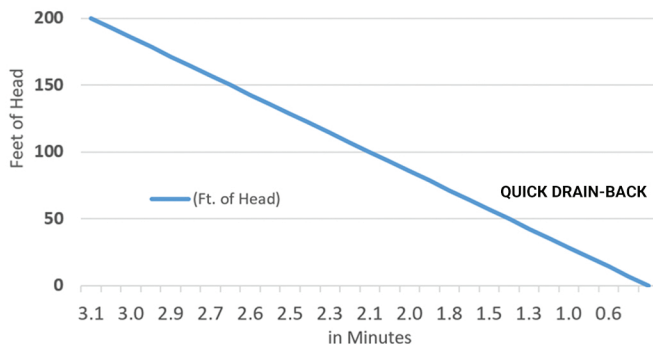
VALVE NORMALLY CLOSED Fig. 1



VALVE ACTIVATED OPEN Fig. 2



FLOMATIC DRAIN-BACK PLUG
Feet of Head Vs. Drain Time



EXAMPLE: A 1" size 200 foot deep riser pipe has a total weight (pipe and water weight) of about 410 lbs. less pump. By using a 1" Flomatic Model 48, (Part Number 4801SS) the weight can be reduced by 18-20% and by over 50% for PVC pipe. For 1 1/4" size riser pipe it will be even greater reduction.

This greatly simplifies pulling the well piping and submersible pump for servicing. In addition, 150 less gallons per 100 foot of pipe will be spilled on the surface of the well head site.

The Model 48 will automatically resets after use.

Size		Part #	A		B		C	Weight	
inch	mm		inch	mm	inch	mm	NPT	lbs	kg
1	25	4801SS	1-3/8	35	2-33/64	64	1	.3	.14



WWW.FLOMATIC.COM

15 Pruyn's Island, Glens Falls NY 12801 | 518-761-9797