

DEEP WELL®

CHECK VALVE

MODEL 80MDW-VFD

Flomatic's Model 80MDW-VFD is a **high performance, low friction loss, Deep Well Check Valve** designed for well water use to support the weight of up to 3,300 feet of pipe and the well pump. The small OD valve body is constructed from very strong Carbon Steel, similar in strength to API J55 tubing.

Featuring a male inlet x female outlet body with 8 round EU (External-Upset) Tubing threads 2 3/8" thru 4 1/2", or 8 round make short casing threads x female long casing threads 4 1/2" thru 9 5/8".

Additionally, the spring loaded metal to metal valve seat, is uniquely designed to provide low friction losses, prevent backflow, and minimize hydraulic shocks in the system. Model 80MDW-VFD provides years of trouble-free operation.

LOWER FRICTION LOSS

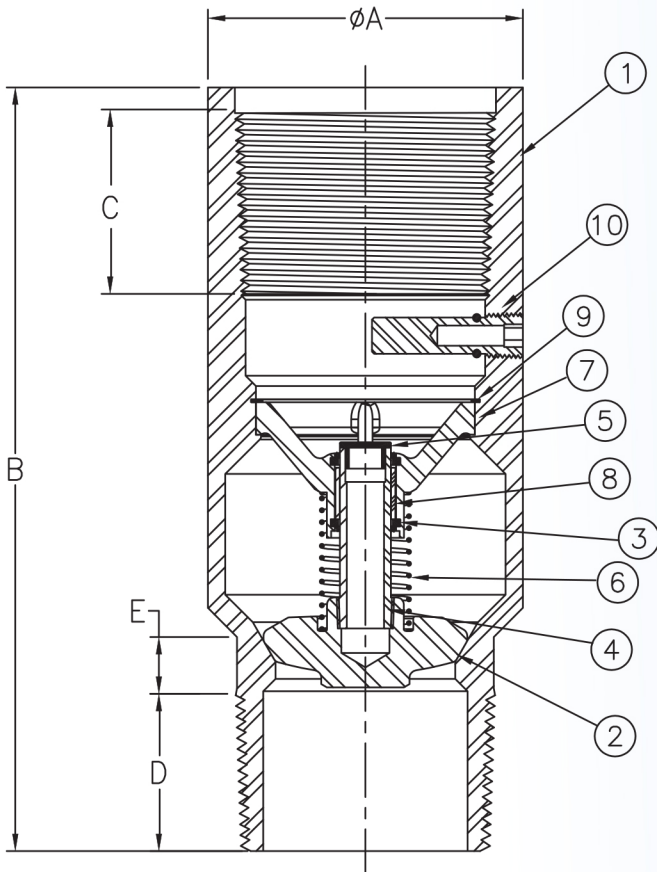
Due to its uniquely designed spring loaded metal to metal valve seat, Model 80MDW-VFD provides lower friction losses, preventing backflow and minimizing hydraulic shocks in the system.

COMPACT DESIGN

Small Valve Body dimension to fit in smaller diameter well casings along with 8 Round or 8 Round short threads.

- Fusion Bonded Epoxy Coated NSF 61 Approved, Inside and Out
- Supports Up to 3,300 feet of Pipe and Pump Weight
- Standard 3/4" Break-Off Plug
- Hydro tested at 4,400 PSI with a 1-Year Warranty
- Different sizes available in an all 316 assembly (Consult Factory)



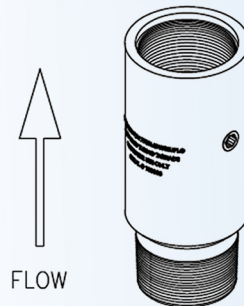


MODEL 80MDW-VFD SPECIFICATIONS

MATERIALS

Item #	Qty	Description	Material	ASTM
1	1	Body (Epoxy Coated*)	Hot Rolled Steel	A519
2	1	Poppet	Hot Rolled Steel	A332
3	2	Wiper	Engineered Composite	-----
4	1	Stem	Stainless Steel	316
5	1	Stem Cap	Engineered Composite	-----
6	1	Spring	Stainless Steel	304
7	1	Stem Guide	Stainless Steel	316
8	1	Bushing	Engineered Composite	-----
9	1	Retaining Ring	Stainless Steel	302
10	1	3/4" Break-Off Plug	Stainless Steel	304

Epoxy Coating is NSF61 approved



PRESSURE MAX - **4,400 PSI**



TEMP MAX - **200°F**



SIZES **2 3/8" - 9 5/8"**

THREAD SIZE		THREAD	PART NUMBER	A		B		C		D		E		WEIGHT	
INCH	MM			INCH	MM	INCH	MM	INCH	MM	INCH	MM	INCH	MM	LBS	KG
2 3/8	60	EU	7937MDW8EUPLG	3 9/64	80	9	229	2 3/32	53	1 15/16	49	3/4	19	7.8	3.5
2 7/8	73	EU	7936MDW8EUPLG	3 45/64	94	9 7/8	250	2 25/64	61	2 1/8	54	3/4	19	12.5	5.7
3 1/2	89	EU	7938MDW8EUPLG	4 39/64	117	11 5/32	283	2 41/64	67	2 3/8	60	3/4	19	19.5	8.9
4 1/2	114	EU	7939MDW8EUPLG	5 13/16	147	13 1/2	343	3 1/8	79	2 5/8	67	3/4	19	37	16.8
4 1/2	114	API	79391MDW8SLPLG	5	127	13 1/2	343	3	76	2 5/8	67	3/4	19	40	18
5	125	API	79402MDW8SLPLG	5 9/16	141	15 3/8	391	3 7/8	98	2 3/4	70	3/4	19	34	15
5 1/2	140	API	4088MDW8SLPLG	6	152	15 5/8	397	3 3/4	95	2 7/8	73	3/4	19	45	20
6 5/8	170	API	4089MDW8SLPLG	7 25/64	188	16 5/32	410	4 19/32	117	3 1/8	79	3/4	19	68	31
7	178	API	40903MDW8SLPLG	7 45/64	195	17 1/8	358	4	102	3 1/8	79	3/4	19	113	51
7 5/8	194	API	4091MDW8SLPLG	8 1/2	216	17 1/2	445	4 13/32	112	3 1/4	83	3/4	19	90	41
8 5/8	219	API	4092MDW8SLPLG	9 5/8	244	18 1/12	470	4 9/16	116	3	76	3/4	19	99	45
9 5/8	245	API	4093MDW8SLPLG	10 5/8	270	19 3/8	492	5 1/16	129	3 3/8	86	3/4	19	154	70

